



Clay County

PARKS & RECREATION MASTER PLAN

BOARD OF COUNTY COMMISSIONERS
11.26.24



The Project Team



+

Community Solutions Group



Project Lead
+ Project Management
+ Parks Planning

RRC Associates



Statistically
Significant Survey

We are Excited to be Here!



GAI's Community Planning + Design Studio

Park + Urban Planning | Urban Analytics | Landscape Architecture + Design



Agenda

- Project Overview
- Existing Conditions
- Public Input
- The Vision
- Implementation Toolkit

Our Assignment



Blueprint for the Future

Create a 10-year vision for a future parks system that responds to a growing community



Improve, Sustain, and Enhance

Improve, sustain, and enhance the quality of life in Clay County



Simplify & Standardize

Develop a common design language for parks within Clay County for improved aesthetics and maintenance

Master Plan Process



WE ARE
HERE!

01

Existing Conditions

Demographics
Park + Facility
Evaluations
Service Area

02

Public Input

Survey
Public Workshops
Focus Groups

03

Master Plan Development

Level of Service
Gap Analysis
Park Standards

04

Strategy & Recommendations

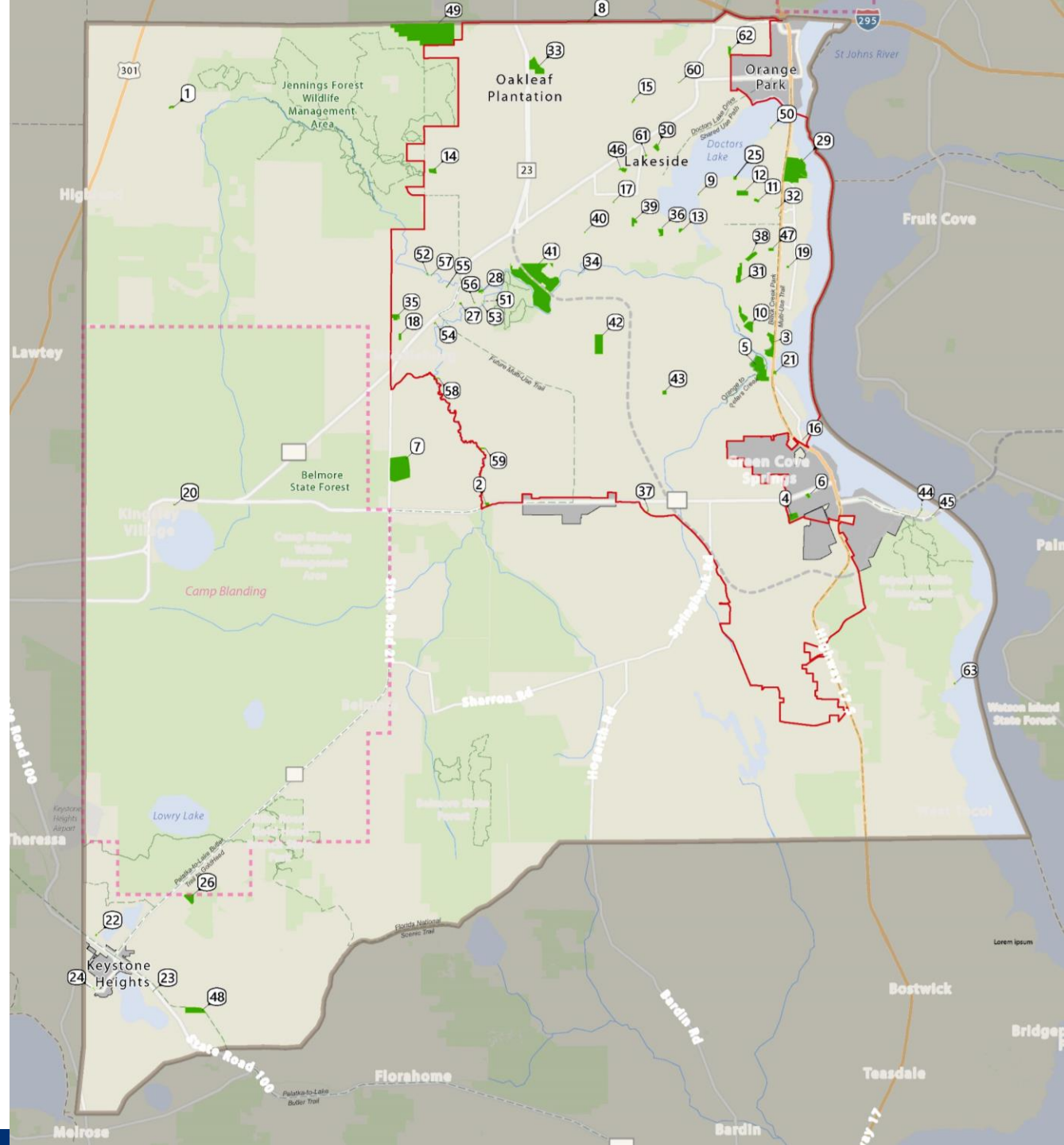
Guiding Principles
Strategy
Recommendations
Capital Improvements

**EXISTING
CONDITIONS.**

The Park System

Park ID	Park/Facility Name	Classification
1	Antler's Run Park	Future
2	Black Creek Kayak Launch	Future
3	Black Creek Park And Trail	Neighborhood
4	Boyd Park	Future
5	Camp Chowenwaw Park	Regional
6	Carl Pugh Park	Community
7	Clay County Regional Sports Complex	Regional
8	Deerfield Point Park	Neighborhood
9	Doctors Lake Park	Neighborhood
10	Dupont Fleming Island	No type defined
11	Eagle Harbor Park	Neighborhood
12	Eagle Harbor Soccer Complex	Community
13	Four Silos Park	Neighborhood
14	Foxmeadow Recreational Park	Neighborhood
15	Foxridge Park	Neighborhood
16	Governors Creek Boat Ramp	Neighborhood
17	Greenwood Park	Neighborhood
18	Hunter Douglas Park	Neighborhood
19	Island Forest Park	Neighborhood
20	Kingsley Lake Park	Neighborhood
21	Knight's Marina & Boat Ramp	Neighborhood
22	Lake Brooklyn Boat Ramp	Boat Ramp
23	Lake Geneva Boat Ramp	Boat Ramp
24	Lake Geneva Park	Neighborhood
25	Lake Shore Park Boat Ramp	Neighborhood
26	Little Rain Lake Park	Community
27	Markus Lane Park	Future
28	Master Sgt. John E. Hayes Memorial Park & Main Street Boat Ramp	Neighborhood
29	Moccasin Slough	Regional
30	Moody Avenue Park	Neighborhood
31	Neptune Park	Community
32	Oak Creek Park	Neighborhood
33	Oakleaf Community Park	Community
35	Omega Park	Community

Park ID	Park/Facility Name	Classification
36	Paul C. Armstrong Park	Community
37	Pier Station Park	Neighborhood
38	Plantation Sports Complex	Community
39	Pond to Park	Future
40	Ridaught Landing Park	Neighborhood
41	Rideout Point Preserve	Regional
42	Ronnie Van Zant Park	Community
43	Saratoga Springs Park	Future
44	Shands Boat Ramp	Neighborhood
45	Shands Fishing Pier	Future
46	Tanglewood Park	Community
47	Thunderbolt Park	Neighborhood
48	Twin Lakes Park	Community
49	Veterans Park	Regional
50	Voluntary Home Buy Out Property 1	Future
51	Voluntary Home Buy Out Property 2	Future
52	Voluntary Home Buy Out Property 3	Future
53	Voluntary Home Buy Out Property 4	Future
54	Voluntary Home Buy Out Property 5	Future
55	Voluntary Home Buy Out Property 6	Future
56	Voluntary Home Buy Out Property 7	Future
57	Voluntary Home Buy Out Property 8	Future
58	Voluntary Home Buy Out Property 9	Future
59	Voluntary Home Buy Out Property 10	Future
60	Voluntary Home Buy Out Property 11	Future
61	W. E. Varnes Park	Neighborhood
62	Walter Odum Park	Community
63	Williams Park & Boat Ramp	Neighborhood



PUBLIC INPUT.

Survey Research Methods

1

Statistically Valid (Invitation Survey)

Surveys were mailed to a systematic random sample of residential addresses in Clay County, with the option to complete online through a password-protected website (1 response per household)



362

Invitation surveys completed
+/- 5.2% Margin of Error

2

Open Link Survey

Later, the online survey was made available to all Clay County stakeholders, including non-county residents (e.g., commuters, residents of nearby communities)



617

Open Link surveys
completed

979
Total
Surveys
Completed

5,000 Surveys Mailed

20
Participants

Focus Groups

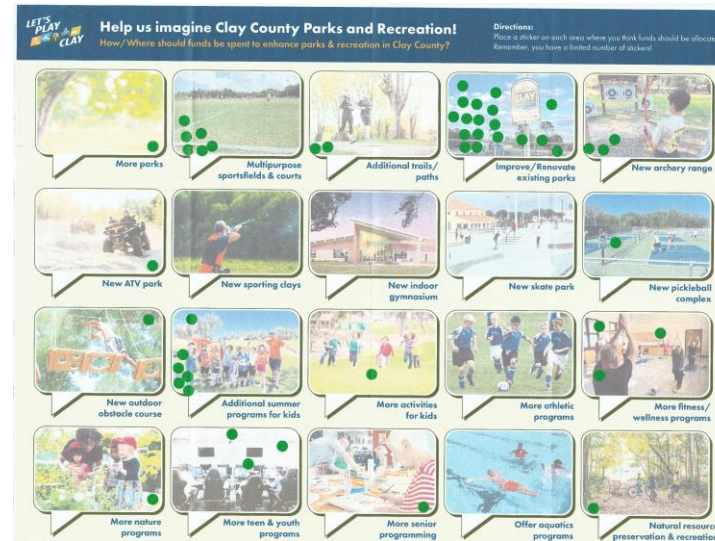
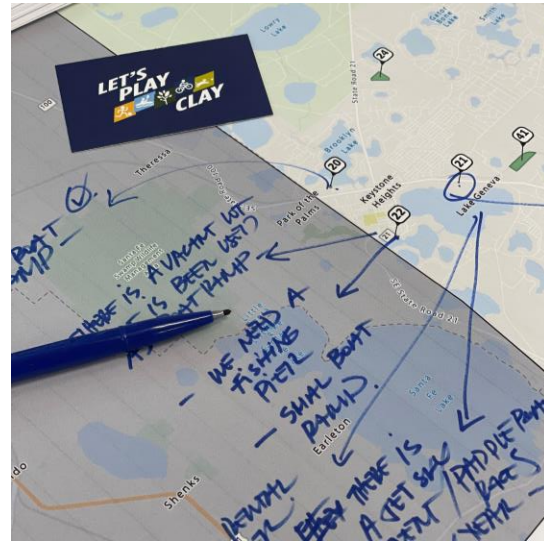
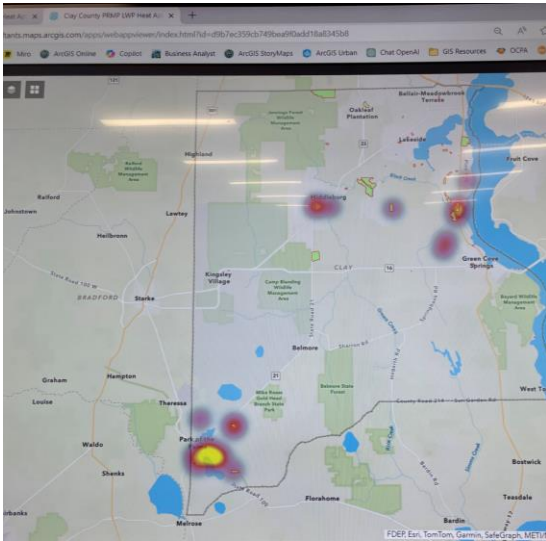
3 Meetings: April 3-11, 2024



61
Participants

Public Workshops

6 Workshops, April 10-18, 2024



Live Work Play

Participants shared places their most used parks in relation to their residences and workplaces.

Write-on-Me

Participants write what parks they enjoy and potential improvements.

Priority Voting

Participants identify the park elements that they consider to be the highest priorities.

Programs/Operations

Participants identify programs they would like to see prioritized.

Key Takeaways

Public Engagement



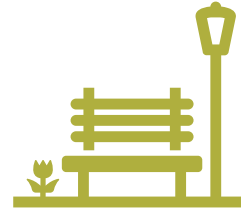
All Ages and Abilities

- Provide ADA accessible amenities and facilities
- Provide play spaces
- Multigenerational parks and programming



Walkability and Connectivity

- Connect parks through trails
- Support County trail efforts



User Experience and Comfort

- Lighting and security upgrades
- Shade and Seating



Plan for Tomorrow

- Mix of passive and active recreation
- Meet indoor and outdoor recreation needs
- Add park amenities
- Provide parks for future residents



Maintain Existing

- Modernize existing parks
- Address infrastructure issues
- Enhance awareness of existing offerings

Level of Service



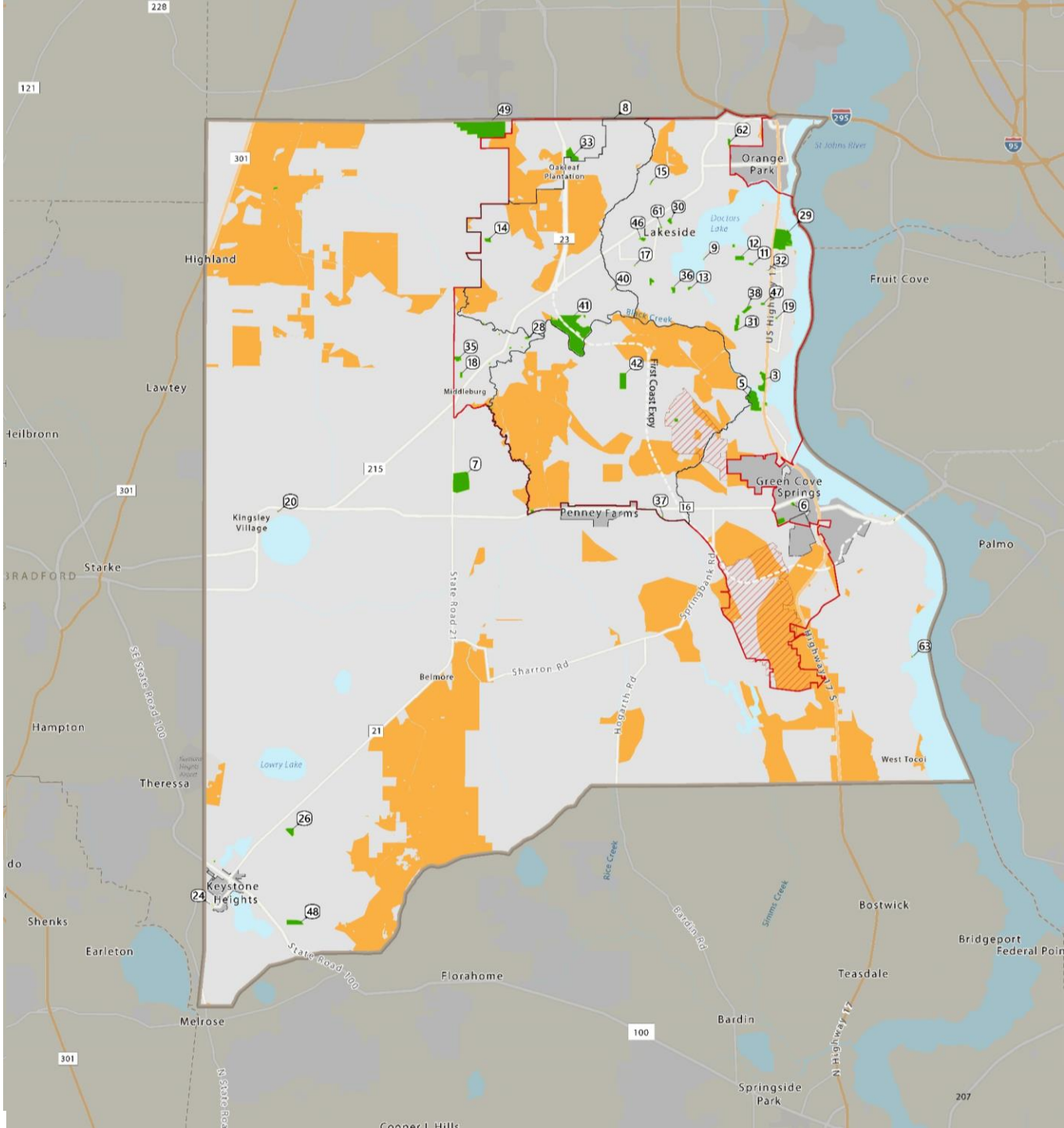
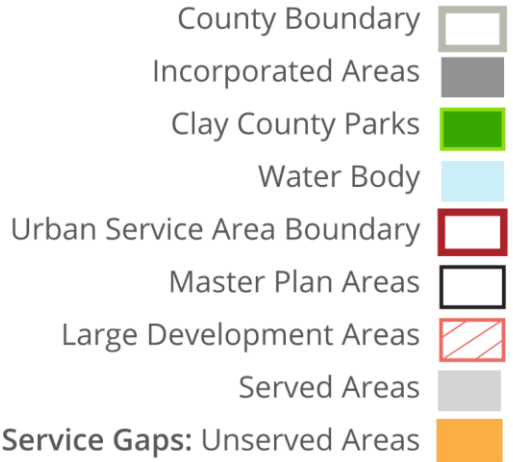
Standards Update: Goals

1. Park Type Definitions – Simplify and standardize park type definitions to provide equitable park experiences throughout the County.
2. Geographic Service Area Standards – Meet demand for “close to home” parks as identified in public engagement.

Level of Service Neighborhood Gaps

Takeaways

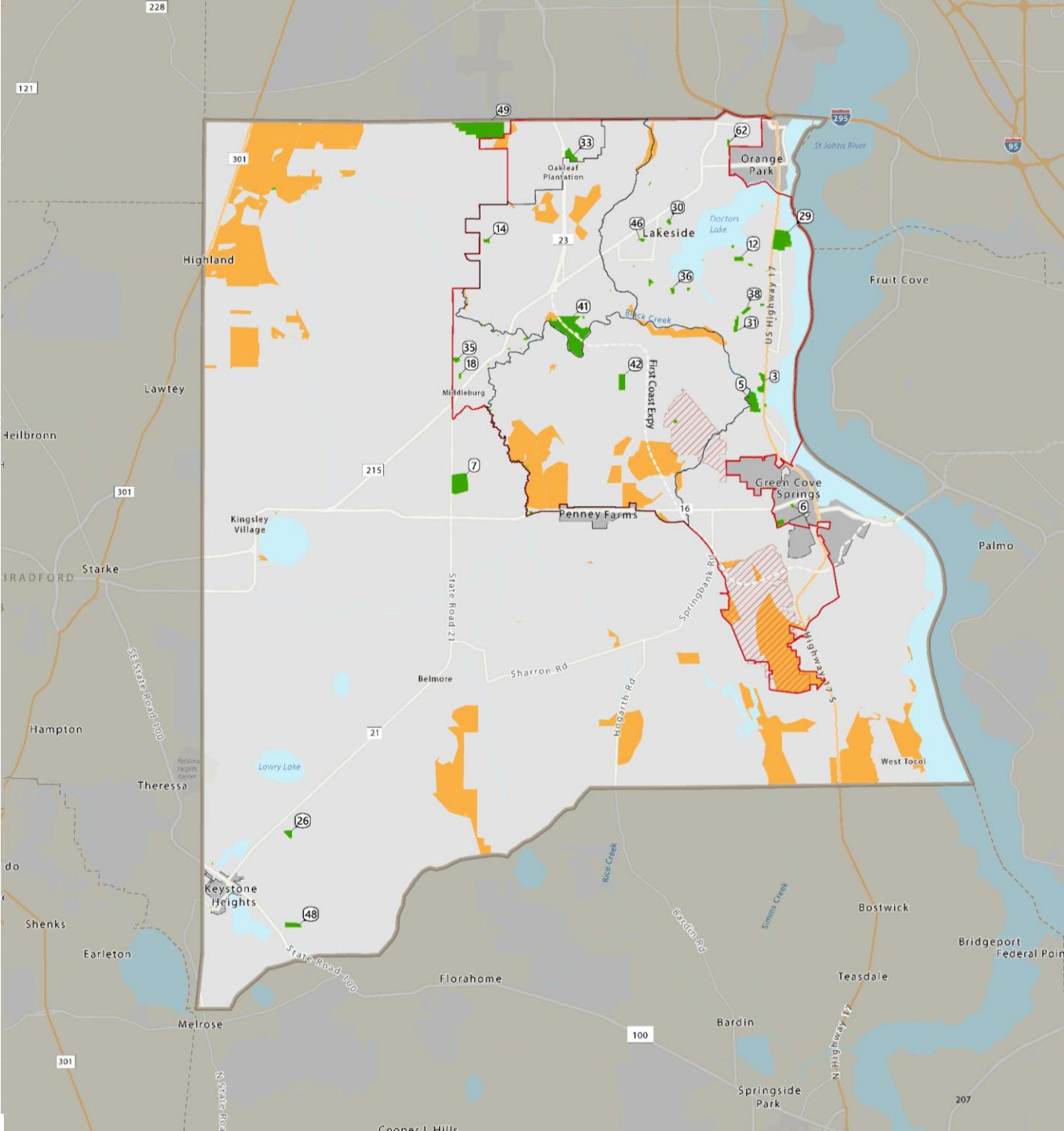
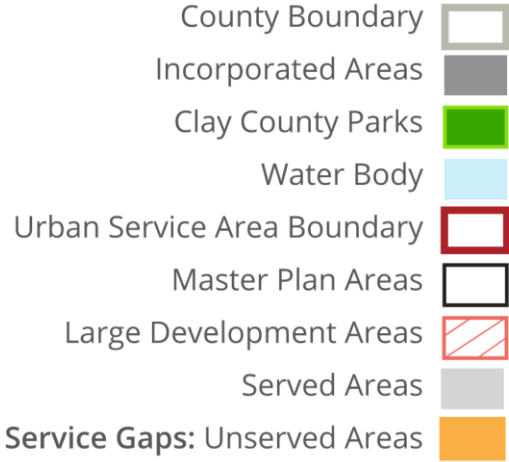
- Level of Service
 - Urban: 3 miles
 - Rural: 5 miles
- Pockets of unserved areas within Urban Service Boundary
- Some gaps in service in rural areas



Level of Service Community Gaps

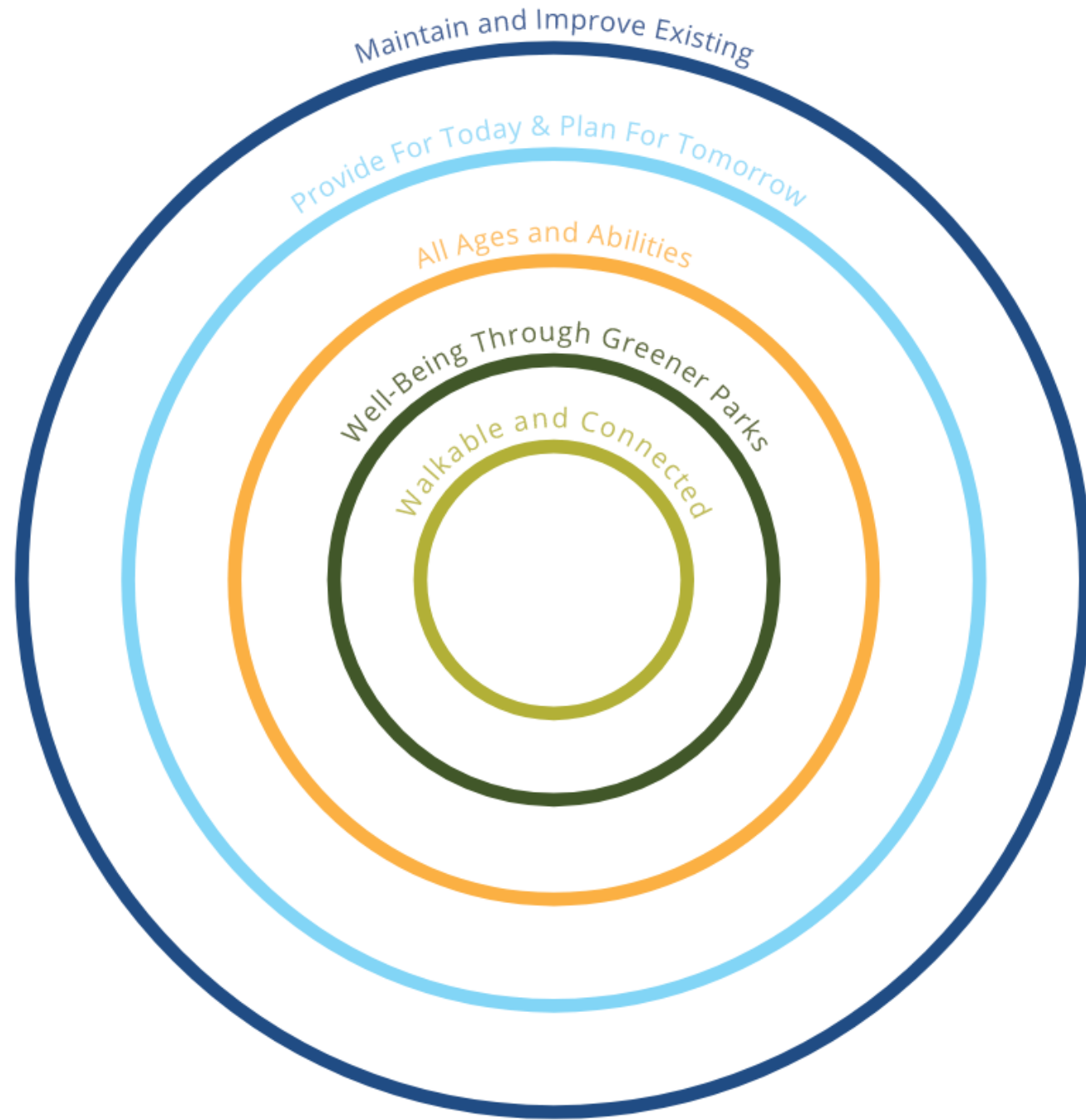
Takeaways

- Level of Service
 - Urban: 5 miles
 - Rural: 10 miles
- Smaller pockets of unserved areas within Urban Service Boundary
- Gaps in service in rural areas focused on northwest



THE VISION.

Guiding Principles



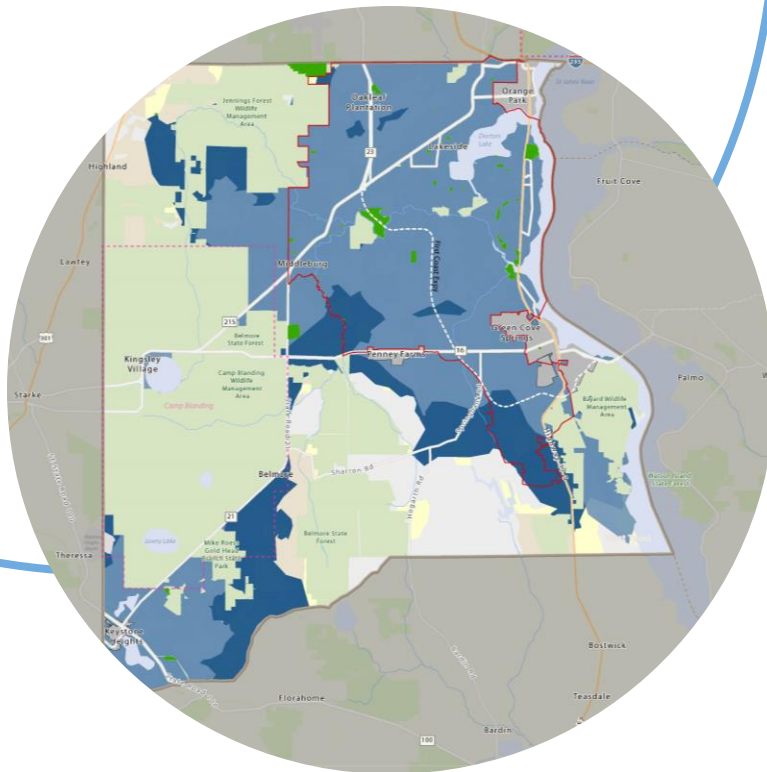
Maintain and Improve Existing



Parks within Clay County are well maintained and modernized to continue to serve the community at a high quality.

- Update and modernize existing parks.
- Ensure parks are functional.
- Create a distinctive Clay County parks look.

Provide for Today & Plan for Tomorrow



The parks system provides for leisure and recreation needs of today while planning for future needs.

- Enhance existing park system to better align with residents' needs.
- Fill gaps in service and provide for future County growth.
- Develop strategy for indoor and aquatics recreation.

All Ages & Abilities



Parks provide opportunities for leisure and recreation for all Clay residents, regardless of age and ability.

- Parks provide ADA accessible amenities and facilities.
- Every park provides amenities for users of all ages.
- Programs are representative of diverse populations.

Well-Being Through Greener Parks



Parks are welcoming places of respite for Clay County residents, providing access to healthy lifestyles.

- Protect and enhance tree canopy and natural areas.
- Provide access to fitness and wellness within parks.
- Provide nature-based recreation opportunities.

Walkable and Connected

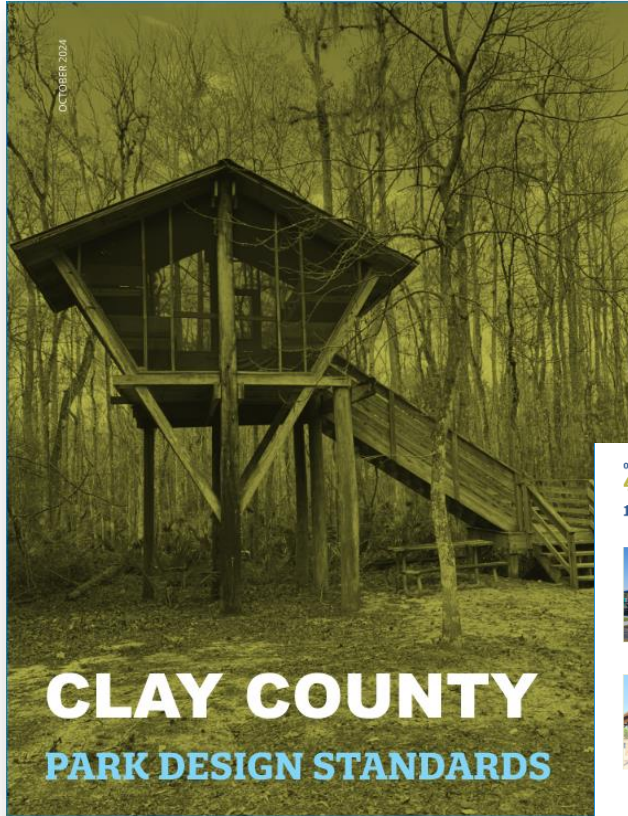


Clay County residents can safely bike or walk to parks and have access to trail experiences.

- Provide safe pedestrian connections into parks.
- Encourage multi-modal transportation use.
- Coordinate and support the development of trails connecting to parks.

TOOLKIT.

Park Design Standards



These design guidelines provide both a design direction and enough flexibility to both unify and differentiate parks throughout the system.

04 Design Standards
4.2 SITE FURNISHINGS
1. Pavilions

Metal Pavilion
 Specifications: Gable roof; 16 ga. standing seam, powdercoated steel, tongue and groove deck below. Place on concrete paving. Column wraps, colors, additional detailing may be added to coordinate with other park elements and/or themes. Include accessories in large pavilions including lighting and ceiling fans. Manufacturer to be determined by designer.
 Size/Shape: Group pavilions rectangular, 20'-30' x 40'-50'; small pavilions, 16'-20' square or octagonal.
 Park Type: Active, Urban, Nature

Wood Pavilion
 Specifications: Gable roof; 16 ga. standing seam, tongue and groove deck below. Wood columns and roof framing. Place on concrete paving. Column wraps, and colors, additional detailing may be added to coordinate with other park elements and/or themes. Include accessories in large pavilions including lighting and ceiling fans.
 Size/Shape: Group pavilions rectangular, 20'-30' x 40'-50'; small pavilions, 16'-20' square or octagonal.
 Park Type: Active, Nature

2. Benches

Metal Bench
 Manufacturer: DuMor
 Style: Bench 500
 Color: Textured silver w/ textured grey slats
 Length: 6'
 Park Type: Active, Urban

Metal Bench
 Manufacturer: DuMor
 Style: Bench 501
 Color: Textured silver w/ textured grey slats
 Length: 6'
 Park Type: Active, Urban

Metal Bench
 Manufacturer: Anova
 Style: Victory Backed Bench, embedded, expanded steel deep seat bench
 Color: Black frame, seat color TBD
 Length: 6' or 8'
 Park Type: Active

Metal Bench
 Manufacturer: Anova
 Style: Victory Flat Bench, embedded, expanded steel deep seat bench
 Color: Black frame, seat color TBD
 Length: 6' or 8'
 Park Type: Active

Wood Bench
 Manufacturer: PRIDE Enterprises
 Style: Classic Wood Bench, In-Ground Mounted
 Color: Galvanized frame and arms, natural wood slats
 Length: 6'
 Park Type: Active and Nature

Wood Bench
 Manufacturer: PRIDE Enterprises
 Style: Trailside Wood Bench, In-Ground Mounted
 Color: Galvanized frame and arms, natural wood slats
 Length: 6'
 Park Type: Active and Nature

Wood Log Bench
 Manufacturer: Locally sourced from timber or tree care company.
 Style: 18" x 18" min. dimensions, natural wood finish.
 Length: 6' minimum
 Park Type: Nature

50 | Clay County Parks Master Plan Update

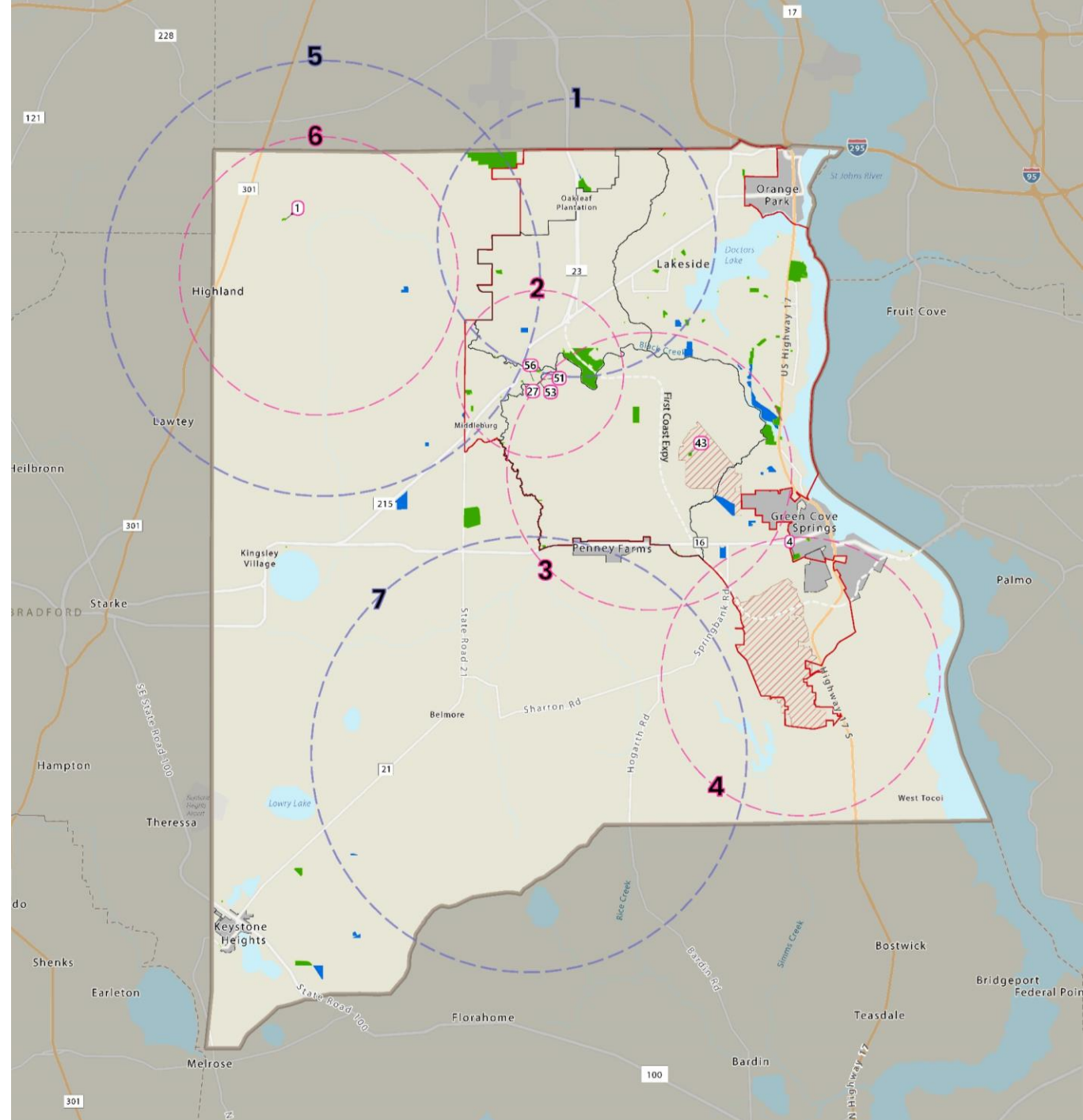
Purpose

1. Provides consistent park brand for all County parks.
2. Aid in the ease of maintenance and operations throughout the system.

Level of Service Vision Map

Responding to Park Service Gaps

1. Existing Park Improvements and Expansions
2. Activating County-Owned Land
3. Acquiring Vacant Land



Other Implementation Tools



- Undeveloped Site Recommendations
 - Recommendations for existing undeveloped park sites
- Prioritization Scoring
 - Scoring for prioritization including:
 1. Overall Park Condition
 2. Park Type Reclassification Needs
 3. Site-specific Master Plans Needs
 4. Park Type Equity Standard Gaps
- Recommended Park Improvements
 - Cost Summary of recommended improvements

Thank YOU!

