

VISION ZERO



CLAY COUNTY



S | S
4 | A

**SAFE
STREETS
FOR ALL**

VISION ZERO
Traffic deaths are PREVENTABLE
Humans make MISTAKES
Prevent FATAL & SEVERE CRASHES
SYSTEMS approach
Saving lives is NOT EXPENSIVE

FORESITE
group



August 19, 2025

SS4A STAKEHOLDER MEETING 1

Introduction and Goals



AGENDA



- 1 Introductions
- 2 What is SS4A & Vision Zero
- 3 Milestones & Schedule
- 4 Stakeholder Committee Role
- 5 Initial Data Overview
- 6 Public Online Survey
- 7 Next Steps





INTRODUCTIONS



Erik Steavens
Project Manager



Robin Cailloux, AICP
Deputy PM



Conroy Jacobs
Data Collection



Doug Stoner
Engagement Lead



Sai Palepu
Transportation Planner



Allie Chezem
GIS & Planner



Xiayu Gao
GIS & Planner

SME Team



Stevie Berryman, PE
Traffic Engineer



Alan Neal, PE
QA/QC



Pamela Richmond
Engagement

WHAT IS VISION ZERO?



Vision Zero is a goal to eliminate all traffic fatalities and sever injuries on our roadways

- Each year over 42,000 people are killed on American roads
 - Impacts families emotionally and economically
 - Community loss and business impacts
 - Taxpayer spending on emergency responses and long-term healthcare costs
 - Public health impacts

■ Vision Zero recognizes that:



Death/serious injury is unacceptable



Humans make mistakes



Humans are vulnerable



Responsibility is shared



Safety is proactive



Redundancy is crucial

WHAT IS SAFE STREETS FOR ALL?

Safe Streets 4 All is a Federal Program to implement Vision Zero

- \$1 Billion/yr allocated for Planning, Demonstration & Implementation
- Adopted Comprehensive Safety Action Plan (CSAP) gives local governments access to these dedicated federal funds
- This project is to create/adopt the Clay County CSAP





GUIDING PRINCIPLES FOR THE CLAY COUNTY SAFETY ACTION PLAN



Safety is the unifying priority that should motivate decision making and design



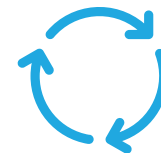
Prioritize the most **vulnerable users**



Acknowledge & build upon Clay County and the region's **previous efforts**



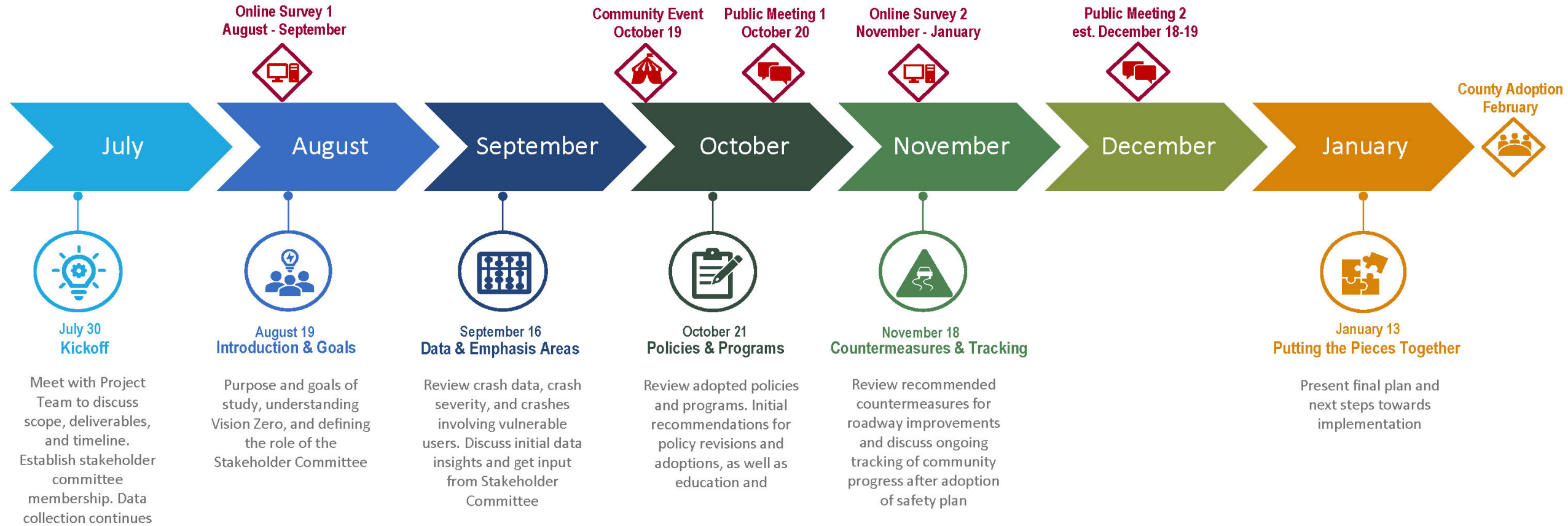
Blend **data-driven tools** with **public and stakeholder input**



Develop a community-vetted, multi-pronged **program** of proven solutions



PROJECT SCHEDULE & MILESTONES



STAKEHOLDER COMMITTEE ROLE

STAY ENGAGED

- Your ongoing participation is **vital** to plan adoption
- Provide **direction** and **guidance** on creating the plan
- Give **feedback** on safety locations
- **Input** on policies and safety emphasis areas

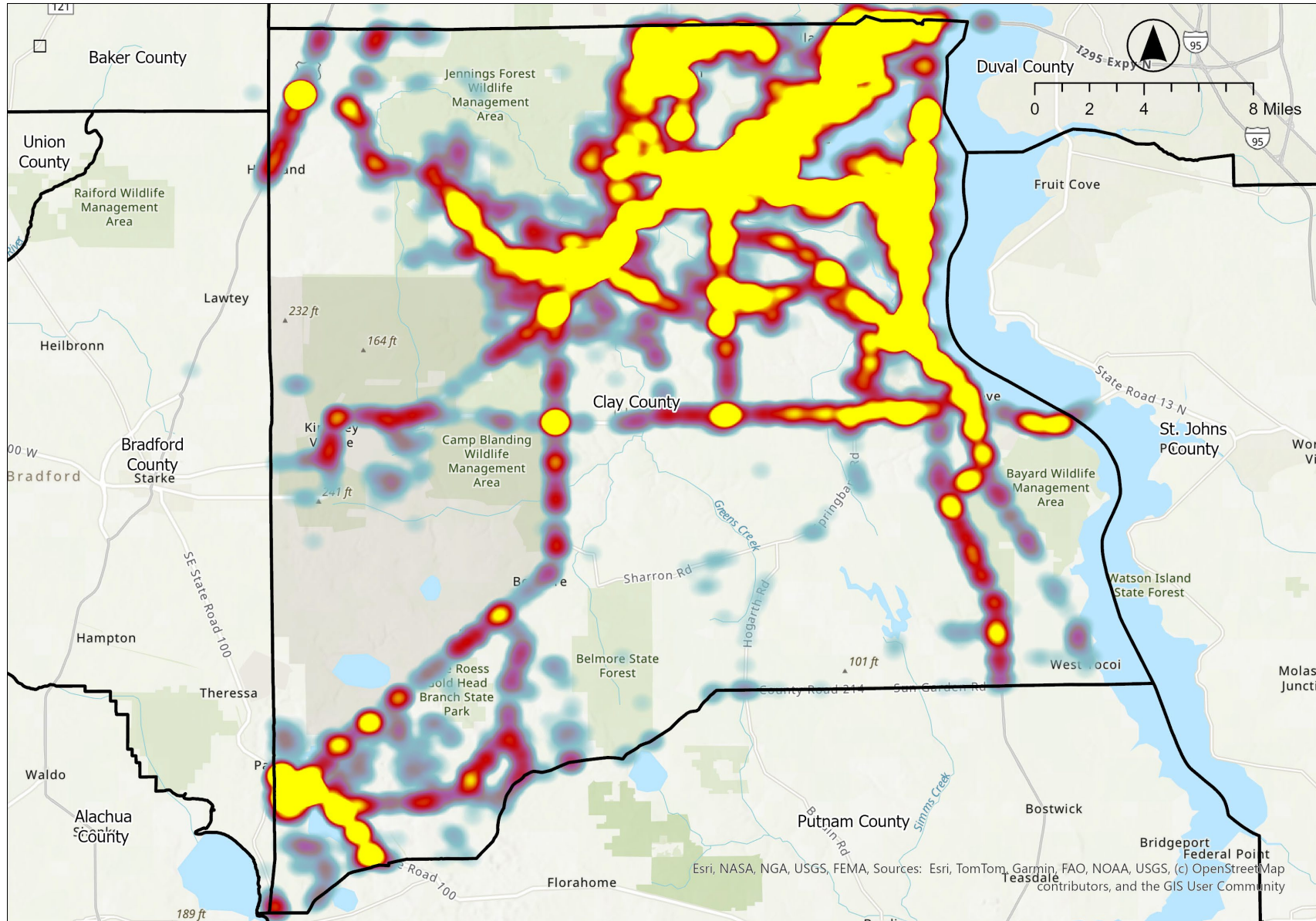
SPREAD THE NEWS

- Act as **liaison** to your organization
- Help **identify** other groups that could benefit or provide valuable insight



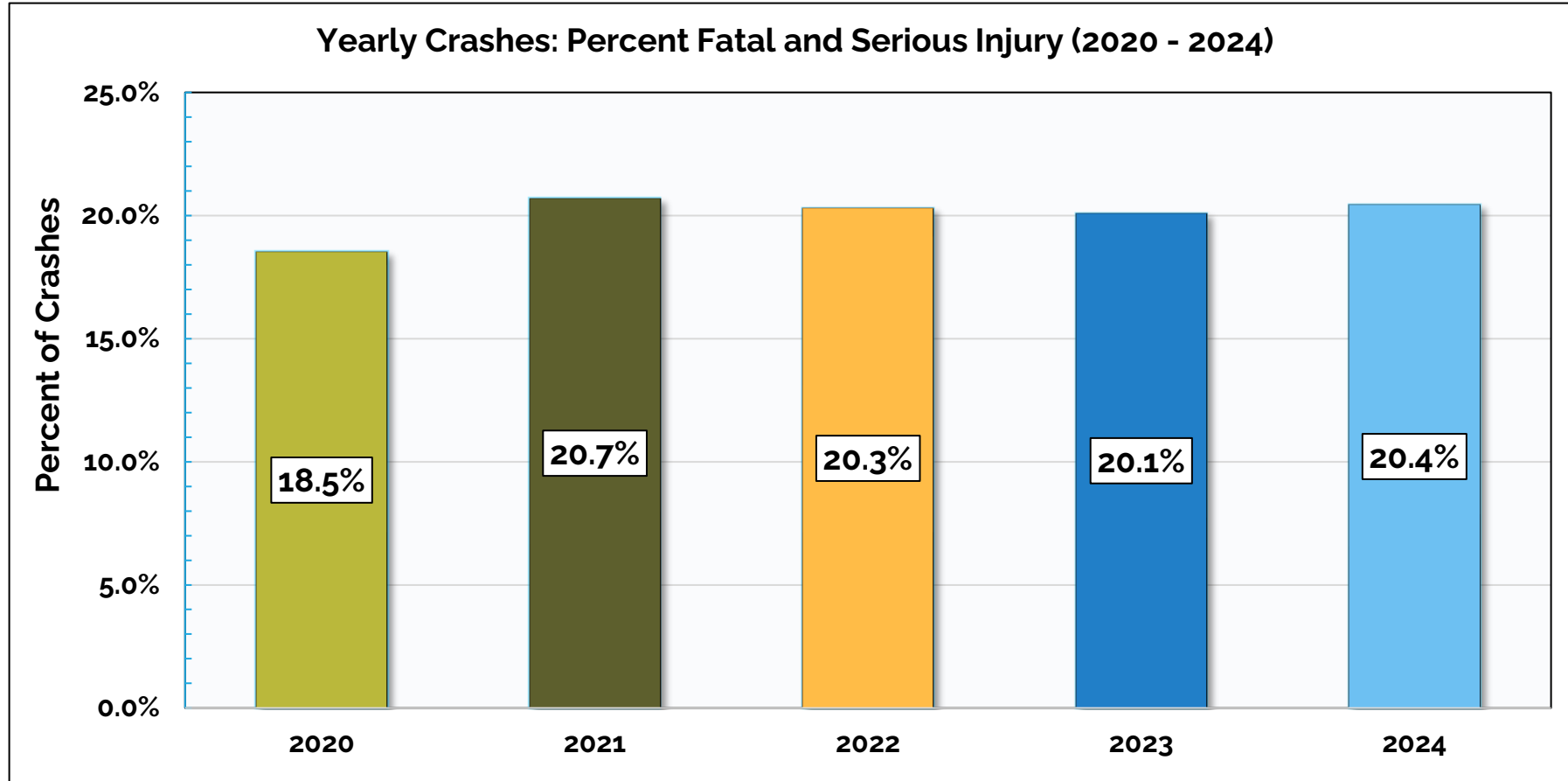


INITIAL DATA REVIEW: CRASH MAP





INITIAL DATA REVIEW: SEVERE CRASHES



What Could This Indicate?

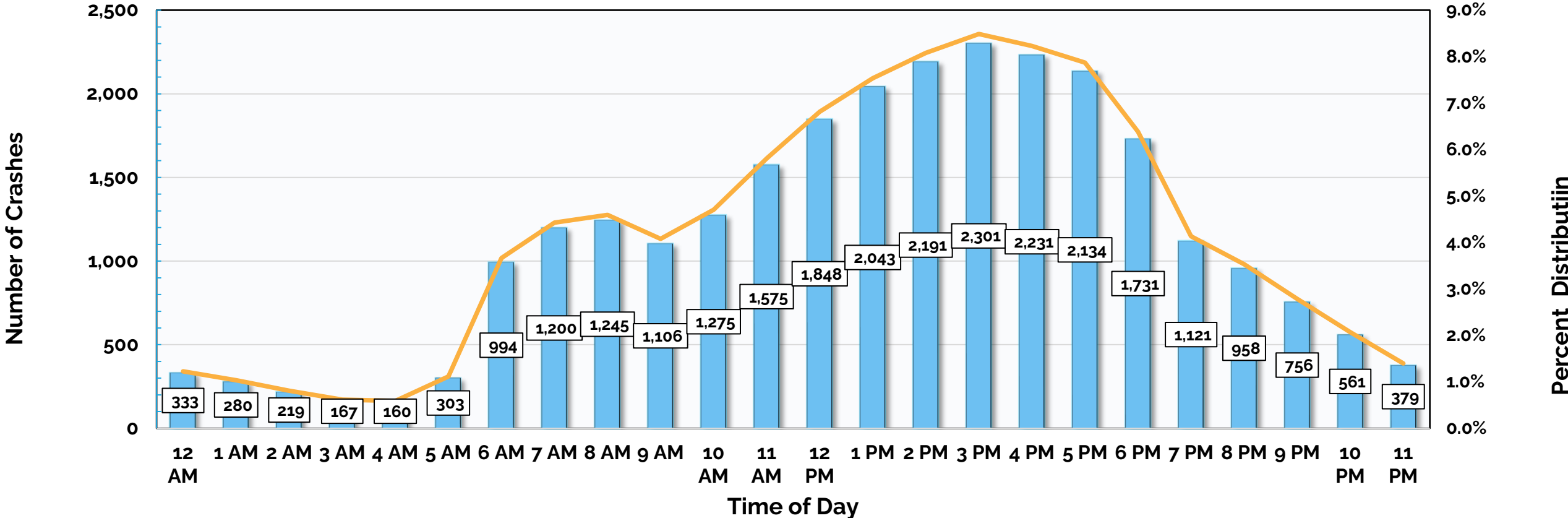
Consistency of data indicates systemic issues rather than emerging/ changing conditions



INITIAL DATA REVIEW: TIME OF DAY



Average Time of Day Crashes (2020 - 2024)



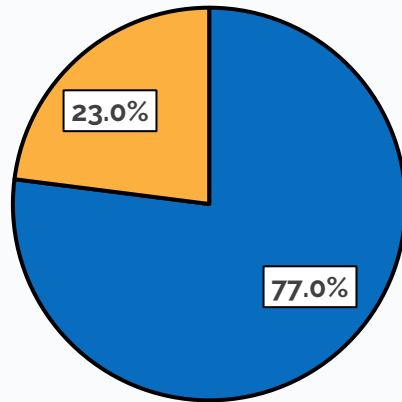
What Could This Indicate?

Peaks around commuter times, shift changes, & school dismissal

INITIAL DATA REVIEW: CONDITIONS

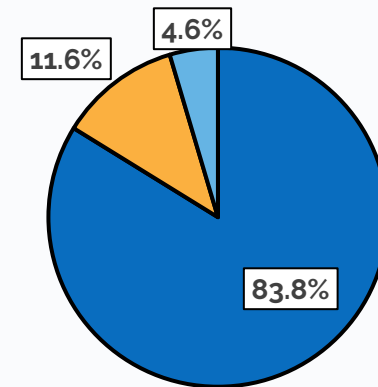


Percentage of Crashes by Day/Night



■ Day ■ Night

Percentage of Crashes for Road Surface Conditions



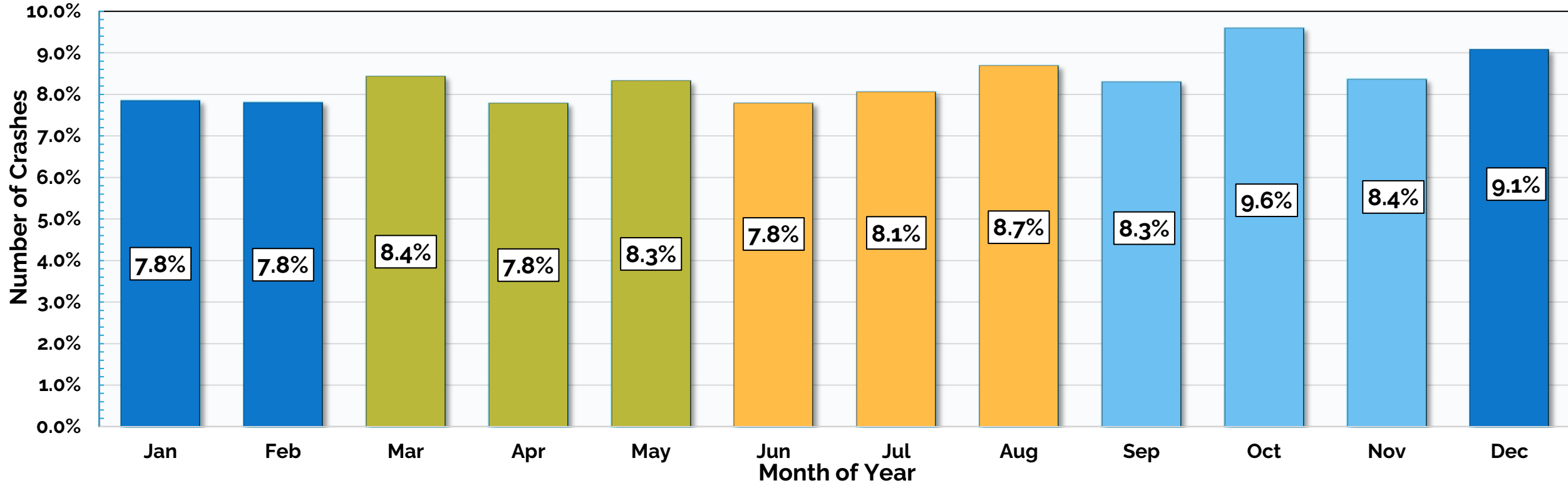
■ Dry ■ Wet ■ Other

What Could This Indicate?

Wet roadways do not contribute significantly to crashes.



Average Monthly Crashes (2020 - 2024)



What Could This Indicate?

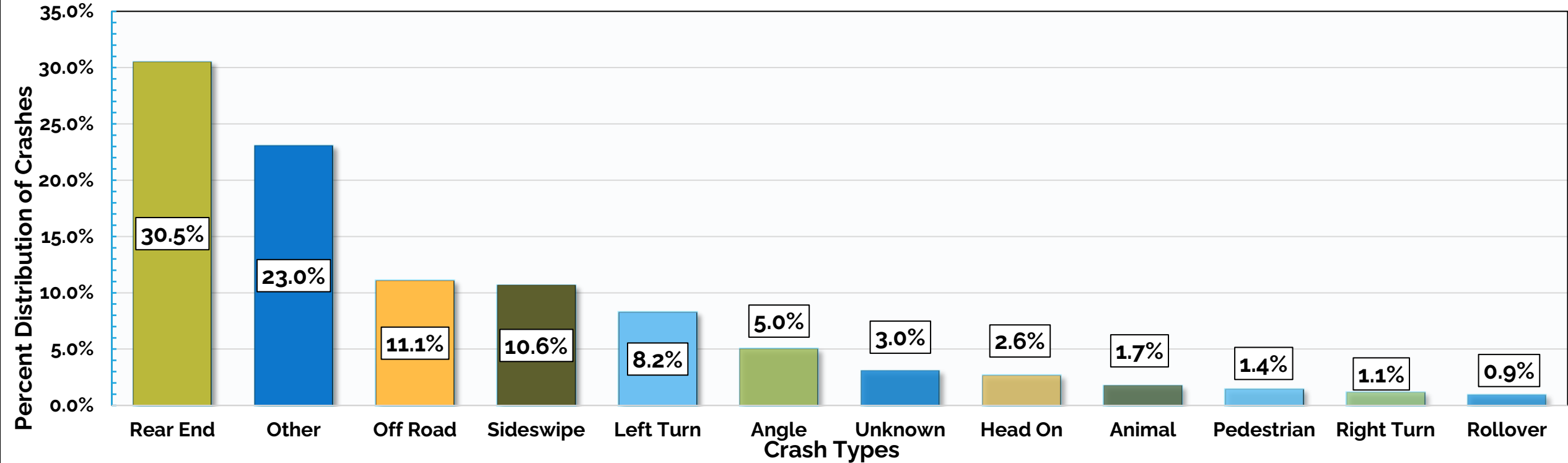
No clear influence of seasonal changes on crash data.



INITIAL DATA REVIEW: CRASH TYPES



Crash Types (2020 - 2024)



What Could This Indicate?

High percentage of rear end crashes may indicate congestion issues.
Need clarification from PD on "Other" designation



■ Example questions:

- What is your primary mode(s) of travel in the county?
- How often does street safety factor into your decision on which mode of travel you choose?
- List specific intersections where you have safety concerns and what concerns you have

- Stakeholder Question: Best way to distribute survey link?

- Scan QR Code to take survey:



NEXT STEPS

01

September 16 @ 11 am
Stakeholder Committee Meeting #2

Data Safety Analysis &
Initial Safety Emphasis Areas

02

October 19
**Community Event:
Fall Festival**

Public outreach event

03

October 20
Public Open House

Fleming Island Public Library



PROJECT TEAM



Erik Steavens – esteavens@fg-inc.net

Tel: 770.368.1399 ext. 375

Doug Stoner – dstoner@fg-inc.net

Tel: 770.368. 1399

Robin Cailloux – rcailloux@fg-inc.net

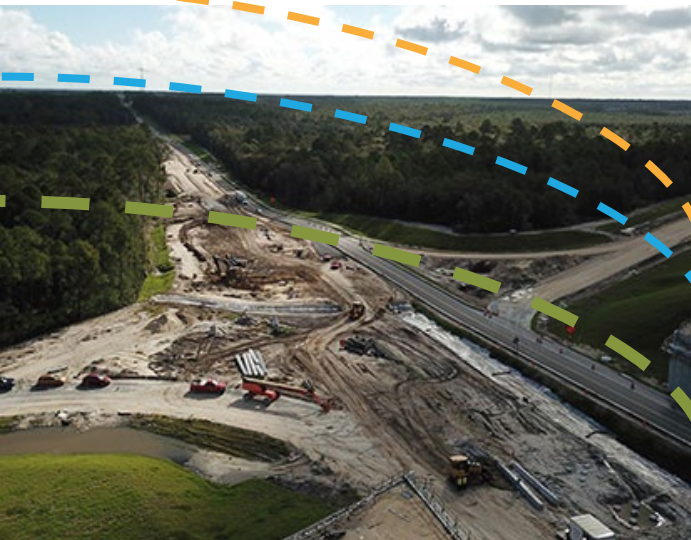
Tel: 770.368.1399 ext. 467

Allie Chezem – achezem@fg-inc.net

Tel: 678.628.9008

Xiayu Gao – xgao@fg-inc.net

Tel: 770.368.1399 ext. 394



S | S
4 | A

**SAFE
STREETS
FOR ALL**

VISION ZERO
Traffic deaths are PREVENTABLE
Humans make MISTAKES
Prevent FATAL & SEVERE CRASHES
SYSTEMS approach
Saving lives is NOT EXPENSIVE

VISION ZERO



CLAY COUNTY


ZERO TRAFFIC DEATHS BY 2050

FORESITE
group



DISCUSSION